

OF FIRE - LIFT COVER
TIVATE FIRE ALARM



**Safety Technology
International**

Pricing Catalogue
2025

www.sti-global.com

PRESS TO E



CONTENTS

FIRE & SAFETY	Call Point Protectors	4
VANDALISM & THEFT	Alarms & Sirens	6
CALL POINTS & SWITCHES	ReSettable Call Points	8
	StopperSwitches®	10
	Stopper®Stations	12
	NoTouch® Buttons	14
COVERS & CAGES	Environmental Enclosures	16
	EnviroArmour® Enclosures	18
	Biometric, Keypad & Thermostat Covers	20
	Steel Web Stoppers®	22

ABOUT STI

We protect the things that protect you.™

Who We Are

Safety Technology International Ltd manufacture and globally distribute a wide range of unique specialist products that protect essential fire, safety, and security equipment

What We Do

STI help prevent false fire alarms, deter theft, and minimise vandalism of critically important life safety equipment.

Where We Came From

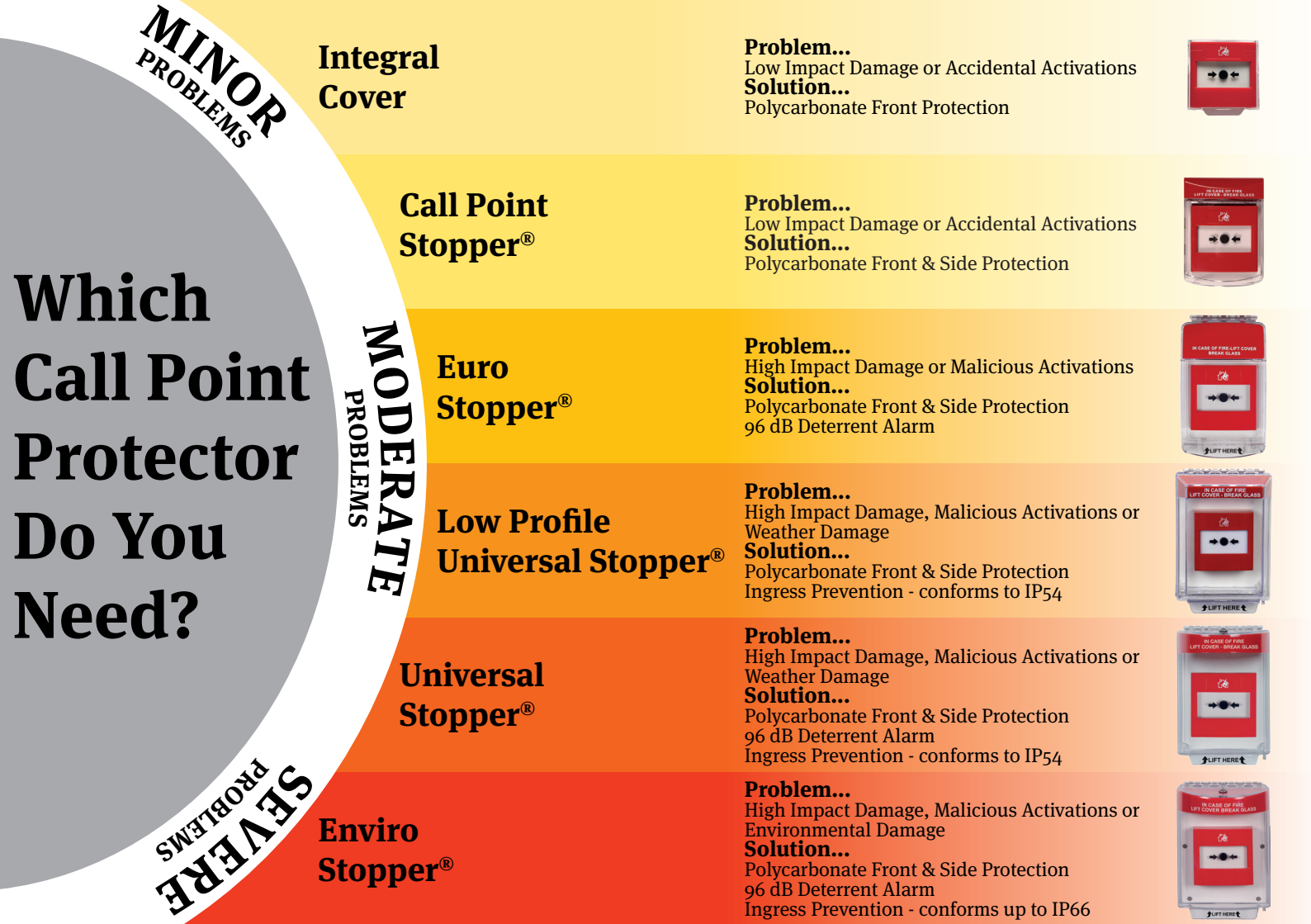
Renowned as the original call point cover manufacturer, for over 40 years STI have remained committed to the improvement of its existing range whilst developing new and innovative products - working hard to continue the work founder Jack Taylor started in 1980.

ONLINE
www.sti-global.com

HOW TO ORDER
sales@sti-emea.com

CUSTOMER SERVICE
+44 (0)1527 520 999

STAY CONNECTED
    



UV-stabilised polycarbonate Call Point Covers protect a wide range of call points and electrical switches, without restricting legitimate operation. All covers are available in a variety of colours for various applications.

**VISIT THE WEBSITE TO VIEW
ALL PRODUCT VARIANTS**

Three year guarantee against breakage of polycarbonate in normal use (one year on electro-mechanical and electronic components).

FIRE & SAFETY

Call Point Protectors

BS 5839-1:2017 compliant

DESIGN

Protective covers with optional integral sounder, prevent false fire alarms, without hindering legitimate operation of a manual call point in the event of an emergency. Colours available are:



INSTALLATION

Quick and easy to install, providing protection in minutes. A simple 4 fixing installation can retrofit over existing device. All models can accommodate flush or surface mount applications.




IP54
Universal Stopper


IP66
Enviro Stopper
with Sealed Mounting Plate

ELECTRONICS

Many models available with or without a 96 dB integral sounder, powered by a battery. The sounder draws immediate attention to the area.

CONSTRUCTION

Tough, clear UV-stabilised polycarbonate housing can withstand the severest of knocks preventing any vandalism or accidental damage to the manual call point or emergency button.



1



2



3



4

1. Integral Cover

Low impact protective cover specifically designed for use with STI call points and push buttons.

STI-CI - Integral Cover

2. Call Point Stopper®

Protective hinged cover prevents misuse and accidental damage to a wide range of electrical switches and call points.

STI-6930 - Flush

STI-6931 - Surface

3. Euro Stopper® Multi Kit

Indoor protective cover, supplied in kit form for self assembly. Red and green housing shells provided.

STI-15010ML - Flush

STI-15020ML - Flush, sounder

STI-15C10ML - Surface

STI-15C20ML - Surface, sounder

4. Universal Stopper®

Domed Protective Cover, built to IP54.

STI-13010FR - Flush

STI-13020FR - Flush, sounder

STI-13110FR - Surface

STI-13120FR - Surface, sounder



5



6



7



8

5. Low Profile Universal Stopper®

Low Profile Protective Cover, built to IP54.

STI-14010FR - Flush

STI-14110FR - Surface

STI-14020FR - Flush, sounder

STI-14120FR - Surface, sounder

6. Enviro Stopper®

IP56/66 Domed Protective Cover.

STI-13610FR - Sealed mounting plate, IP66

STI-13620FR - Sealed mounting plate, sounder, IP66

STI-13710FR - Open mounting plate, IP66

STI-13720FR - Open mounting plate, sounder, IP66

7. Stopper II®

Larger domed cover with a wire suspended mechanism.

STI-1100 - Flush, sounder

STI-1130 - Surface, sounder

STI-1200 - Flush

STI-1230 - Surface

8. Weather Stopper II®

Larger weatherproof domed cover with a wire suspended mechanism.

STI-1250 - Flush

STI-3150 - Surface

VANDALISM & THEFT

Alarms & Sirens

Wireless models available on selected products

The Exit Stopper is a unique and highly effective way to alert you to any unauthorised exits or entries through emergency exit doors. If the protected door is opened, the Exit Stopper emits a powerful 95/105 dB warning alarm and visual flashing beacon.

**VISIT THE WEBSITE TO VIEW
ALL PRODUCT VARIANTS**

Three year guarantee against breakage of polycarbonate in normal use (one year on electro-mechanical and electronic components).

DESIGN

Unique and highly effective way to alert you to any unauthorised exits or entries through emergency exit doors. It can also serve as an inexpensive security device and help prevent theft. Comes with optional Multi Lingual Warning Instruction Label sheet in 21 languages.

INSTALLATION

Highly versatile, can be mounted or installed on to any type of door, including remote placement of sounder and double door installation.



ELECTRONICS

The new beacon feature provides a visual indication when the unit is 'on' and flashes when activated. It works alongside the warning alarm, powered by a 9V PP3 battery. The unit is fitted with a low battery warning. There are a number of user programmable features to suit application needs.

CONSTRUCTION

Virtually indestructible UV-stabilised polycarbonate housing.



1

1. Exit Stopper®

Door alarm alerts to unauthorised use of exit doors.

STI-6400 - Red, single door

STI-6402 - Red, double door

STI-6400-G - Green, single door



2

Alarm unit to prevent theft, vandalism and misuse of fire extinguishers and other life safety devices.

STI-6200 - Theft Stopper

STI-6200-KS-CHR - Chair Theft Stopper



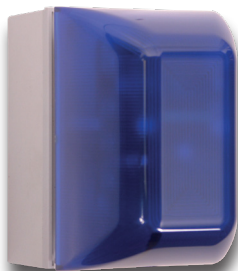
3

Highly effective visual and audible signalling device with 8 flash patterns and speed selection. Multiple colours available.

STI-SA5500-B - Blue, round model, conforms up to IP66

STI-SA5600-A - Amber, rectangular model

2. Theft Stopper®



4

4. Select-Alert

Alarm unit, alerting visually or audibly to unauthorised use of important electronic devices. Multiple colours available. 32 selectable sounds.

STI-SA5000-R - Red, Select-Alert Alarm Mini Controller

STI-SA5000-B - Blue, Select-Alert Alarm Mini Controller

3. Sirens & Strobes



5

5. Mini Theft Stopper®

Protects freestanding or cabinet housed fire extinguishers and other equipment.

STI-6255 - Single Protection

STI-6255-M2 - Double Protection



6

6. Alert Point

The Alert Point is an aesthetically pleasing, robust and fully featured stand-alone, self-contained alarm system.

AP-1-R-A - Alert Point red house flame

AP-3-R-A - Alert Point with beacon red house flame

CALL POINTS & SWITCHES

ReSettable Call Points

Ask us about our Addressable Solutions

The ReSet Call Points mimic the feel of breaking glass whilst offering the benefits and environmental advantages of a resettable operating element. Suitable for areas that are at high risk of false activations or sensitive to broken glass.

**VISIT THE WEBSITE TO VIEW
ALL PRODUCT VARIANTS**

Three year guarantee against breakage of polycarbonate in normal use (one year on electro-mechanical and electronic components).



ELECTRONICS

Single Pole Changeover, Double Pole Changeover, Conventional Fire model (470 680Ω) or Sav-Wire 2 Wire Systems.

DESIGN

An indicator drops into view at the top of the window on activation. The unit is then simply reset with a key and is ready for use. A range of colours available.



CONSTRUCTION

Attractive, high value look and feel. Glass appearance maintains operator deterrence.

INSTALLATION

Easy installation due to no glass elements that could be broken or incorrectly fitted. Integral cover and other cover options available.





1. Indoor ReSet Call Point

Unique manual call point that simulates break glass activation. Red models are EN54-11 approved.

RP-RD2-01 - Red, dual mount, EN54-11

RP-RS2-01 - Red, surface mount, EN54-11

RP-RF2-01 - Red, flush mount, EN54-11

RP-GD2-11 - Green, dual mount, double pole

RP-YS2-02 - Yellow, surface mount, single pole

2. Global ReSet Call Point

Resettable call point suitable for worldwide installation. All models are UL Listed.

GR-RF-01-0 - Red, flush mount

GR-RS-01-0 - Red, surface mount

GLR101RM-EN - Green, flush mount

GLR301AB-EN - White, flush mount, ABORT text

3. Weatherproof ReSet Call Point

Suitable for indoor and outdoor use, harsh environments and areas that are sensitive to broken glass. IP67 certified.

WRP2-R-01 - Red, convention fire model, EN54-11

WRP2-G-11 - Green, double pole

WRP2-W-02 - White, single pole

WRP2-B-02 - Blue, single pole

The StopperSwitches are a highly versatile range of attractive indoor and outdoor Push Buttons and indoor Key Switches combining unique design, quality and value. They are aesthetically appealing, low/high voltage switches, which fit any standard UK-type switch socket box.

VISIT THE WEBSITE TO VIEW ALL PRODUCT VARIANTS

Three year guarantee against breakage of polycarbonate in normal use (one year on electro-mechanical and electronic components).

CALL POINTS & SWITCHES

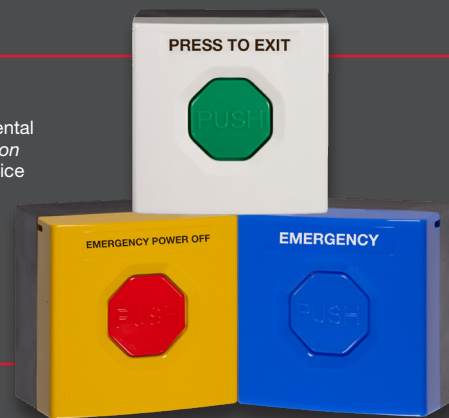
StopperSwitches

DESIGN

Inset design on the push button helps prevent accidental activations. *Standard function marking* label sheets or choice of custom label.

INSTALLATION

Quick and easy installation. All models are supplied as Dual Mount (35mm black back box and flush mounting plate) to allow the user the choice of flush or surface installation.



ELECTRONICS

Low profile, heavy-duty terminations. Wide range of operating voltages up to 250 volts. Key-to-Reset, Momentary and Pneumatic models available.

CONSTRUCTION

Moulded in tough UV-stabilised polycarbonate. Space available for function marking or operating instructions.



1. Indoor Push Buttons

Latching (key-to-reset), momentary and pneumatic models with a variety of colour options.

SS3-7G14 - Momentary, white with green button

SS3-1R04 - Latching, red with red button

SS3-5Y60 - Pneumatic, yellow with yellow button

2. Indoor Key Switches

Low/high voltage switches fit any standard UK-type switch socket with a variety of colour options. Ideal for units where casual activation is discouraged.

SS3-3041 - 2 position key switch, double pole, green

SS3-1020 - 2 position key switch, single pole, red

SS3-7053 - 3 position key switch, white

3. Weatherproof Push Buttons

Latching (key-to-reset) and momentary models with a variety of colour options, designed for use within harsh environments. IP67 certified.

WSS3-5R04 - Latching, yellow with red button

WSS3-3W14 - Momentary, green with white button

WSS3-7B04 - Latching, white with blue button

CALL POINTS & SWITCHES

Stopper[®] Stations



DESIGN

Incorporates a unique, patented design that helps prevent accidental activation. Custom label option in any language or choose from standard labels. Protective covers available.

ELECTRONICS

Activation options:
Key-to-Reset, Momentary,
Turn-to-Reset, Pneumatic or
Key-to-Activate.
Three 12-24 volt LED
colour indicators.

INSTALLATION

5VA flammability rating on backplate and spacer. US and European friendly. Back box and spacer kits depend on button choice, options available for flush or surface installations.

CONSTRUCTION

Station housing moulded of tough polycarbonate. Stainless steel backplate.

UL listed multipurpose buttons and switches accommodate a wide range of applications. A number of standard models are available or custom units can be created to meet specific needs.

VISIT THE WEBSITE TO VIEW ALL PRODUCT VARIANTS

Three year guarantee against breakage of polycarbonate in normal use (one year on electro-mechanical and electronic components).



1. SS2102EX-EN

Green, Key-to-Reset (illuminated),
EMERGENCY EXIT text

2. SS2305ZA-EN

White, Momentary (illuminated), Custom label

3. SS2503ZA-EN

Orange, Key-to-Activate, Custom label

4. SS2201ZA-EN

Yellow, Turn-to-Reset, Custom label

Colour Options



Activation Options

- 2 = Key-to-Reset
- 3 = Key-to-Activate
- 4 = Momentary
- 7 = Weather Resistant Momentary
- 8 = Pneumatic
- 9 = Turn-to-Reset

Standard Text Options

- | | |
|----------------|-----------------------|
| ABORT | EVACUATION |
| EMERGENCY | EXIT |
| EMERGENCY EXIT | HVAC SHUT-DOWN |
| EMERGENCY | LOCKDOWN |
| POWER OFF | PUSH TO EXIT |
| EMERGENCY STOP | or CUSTOM TEXT |

Language Options

- Standard Text languages available:**
 EN = English ES = Spanish
 FR = French ZL = Other Language
- CUSTOM TEXT**
 Available in any language
 1 line, 13 characters or 2 lines, 20 characters

This touch free button applies NoTouch® technology which helps reduce the spread of germs in any public buildings. To exit, a person must simply wave their hand in front of the device. The infrared will pick up the motion and unlatch the time adjustable door.

**VISIT THE WEBSITE TO VIEW
ALL PRODUCT VARIANTS**

One year guarantee on electro-mechanical and electronic components.

CALL POINTS & SWITCHES

NoTouch® Buttons

DESIGN

Buttons are shipped with the red light indicating standby, and it changes to green when active. Wave a hand in front of the red illuminated button and the colour turns to green indicating the door released. Option for the opposite colours, green/standby and red/active.

INSTALLATION

Faceplate is slightly oversized to cover old installation marks. Back boxes available separately for surface mounting, back box included with slim models.

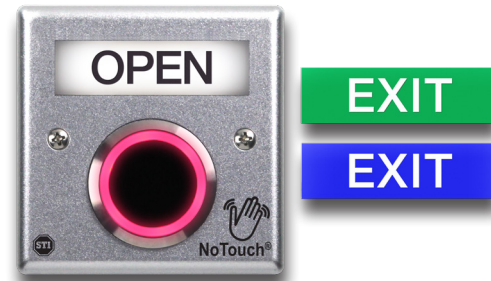


ELECTRONICS

NoTouch® infrared detection. Operating voltage 12-24 and form c dry contact. Detection range 4cm-15cm with adjustable relay latch 0.5-20 seconds.

CONSTRUCTION

Faceplates constructed from either medical/food grade 304 stainless steel or heavy duty die cast aluminium.



1. NoTouch® Stainless Steel Buttons

Touch free button with three standard models and dual colour status LED.

NT-SS300-EN - European single gang, door symbol

NT-SS301-EN - European single gang, EXIT

NT-SS302-EN - European single gang, OPEN

KIT-BB3SS - European single gang back box

2. Slim NoTouch® Stainless Steel Buttons

Slim/mullion mount touch free button with three standard models, dual colour status LED and back box included.

NT-SS000-EN - Slim/mullion, door symbol

NT-SS001-EN - Slim/mullion, EXIT

NT-SS000-EN - Slim/mullion, OPEN

3. NoTouch® Cast Aluminium Buttons

European and US single gang models with interchangeable snap-in illuminated LED message lenses.

NT-CA300-EN - European single gang

NT-CA100-EN - US single gang

KIT-BB3CA - European single gang back box

This range of multipurpose, transparent polycarbonate enclosures and metal cabinets are designed for the protection of fire and security control panels and other electronic equipment. Combining a tough, rugged construction with stylish design, the series offers excellent protection for a wide range of equipment.

**VISIT THE WEBSITE TO VIEW
ALL PRODUCT VARIANTS**

Three year guarantee against breakage of polycarbonate in normal use (one year on electro-mechanical and electronic components).

COVERS & CAGES

Environmental Enclosures

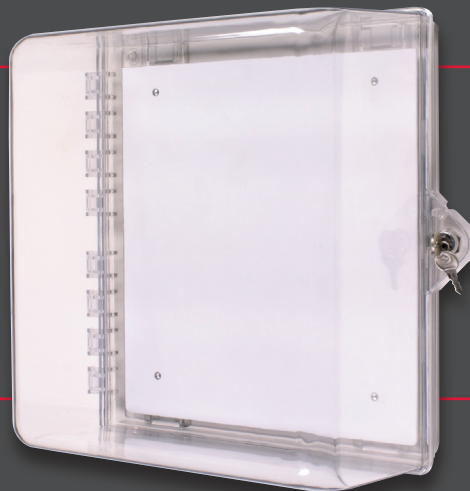
Alarms, heaters and aircon available on selected models

DESIGN

Robust enclosures protect control panels located in areas where the environmental conditions are extreme or the threat of vandalism and misuse is high.

INSTALLATION

External mounting tabs allow the enclosure to be easily installed on to any wall surface, providing protection without the need to change the location of the equipment. Mounting accessories and tamper-proof screws are provided.



ELECTRONICS

Available with or without a 95 dB alarm, powered by a 9V PP3 battery, to deter unauthorised access to devices.

CONSTRUCTION

Tough UV-stabilised polycarbonate housing can withstand the severest of knocks preventing any vandalism or accidental damage.



1



2



3

1. Medium Polycarbonate Enclosure

STI-7530 - Backplate, key lock
STI-7531 - Backplate, thumb lock
361mm x 310mm x 164mm

2. AED Cabinet with Thumb Lock

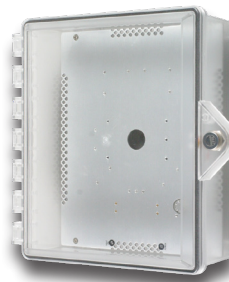
STI-7535AED - Wire shelf, strobe/siren alarm
STI-7533AED - Wire shelf, siren alarm
STI-7531AED - Wire shelf, no alarm
For dimensions, see website

3. Small Polycarbonate Enclosure

STI-7520 - Key lock
STI-7521 - Thumb lock
225mm x 276mm x 92mm



4



5

4. Polycarbonate Enclosure with Siren Alarm

STI-7523 - Thumb lock
STI-7522 - Key lock
225mm x 276mm x 92mm

5. Polycarbonate Enclosures with Heater

STI-7520-HTR - Key lock, heater
STI-7521-HTR - Thumb lock, heater
206mm x 256mm x mm



COVERS & CAGES

EnviroArmour® Enclosures

OPTIONS

All covers are lockable for additional security and can be supplied with a clear or opaque front panel depending on requirements. Available with heater and thermostat options, breather vents and condensation drains.

CONSTRUCTION

Non-metallic. Tough polycarbonate or fibreglass material which allows the unit within to be protected yet accessible. The series meets the requirements of IP54.



DESIGN

Enclosures protect against vandalism, accidental damage and ingress. Available in a range of sizes to suit a variety of applications. Models available with clear window to allow for remote visual inspection.

INSTALLATION

All enclosures are supplied with mounting plates to allow for instant use of the product.

Weatherproof non-metallic lockable fibreglass or polycarbonate enclosures, designed to prolong the operating life of electronic products that require protection from harsh environments as well as guarding against accidental or malicious damage.

**VISIT THE WEBSITE TO VIEW
ALL PRODUCT VARIANTS**

Three year guarantee against breakage of polycarbonate in normal use (one year on electro-mechanical and electronic components).



1

1. Polycarbonate EnviroArmour

Models are built to IP54 and IK09.

ET-121006-O - Opaque door

ET-121006-C - Clear door

250mm x 300mm x 150mm

ET-141007-O - Opaque door

ET-141007-C - Clear door

250mm x 350mm x 180mm

ET-181408-O - Opaque door

ET-181408-C - Clear door

350mm x 465mm x 200mm



2

2. Fibreglass EnviroArmour

Models are built to IP54.

ES-312312-O - Opaque door

800mm x 600mm x 300mm

ES-231609-O - Opaque door

600mm x 400mm x 230mm

ES-161608-O - Opaque door

400mm x 400mm x 200mm

ES-121005-O - Opaque door

300mm x 250mm x 140mm

These tough covers have been designed to protect card readers, access control keypads and similar devices. Guards against abuse and accidental damage, as well as from the external elements. All covers are moulded from tough polycarbonate material that is UV-stabilised against discolouration.

VISIT THE WEBSITE TO VIEW
ALL PRODUCT VARIANTS

Three year guarantee against breakage of
polycarbonate in normal use.

COVERS & CAGES

Biometric, Keypad & Thermostat Covers

DESIGN

Covers designed to protect access and keypad control panels and thermostats from vandalism, misuse and accidental damage as well as the elements.

INSTALLATION

Quick and easy to install. Covers can be retrofitted over an existing device allowing it to maintain its current location.



OPTIONS

Certain models are available in a smoke finish for further security. Gasket replacement is recommended at least every five years.

CONSTRUCTION

Covers are moulded from tough, UV-stabilised polycarbonate. Models fitted with stainless steel torsion spring allows the cover to maintain in a closed position.



1



2



3



4



5

1. Identification Reader Cover

STI-6520-C - Clear, enclosed
STI-6520-S - Smoke, enclosed
STI-6521-C - Clear, open
STI-6521-S - Smoke, open

2. Bio Protector

BIO-7504 - Clear
BIO-7505 - Smoke

3. Polycarbonate Cover

STI-7700 - Open back
STI-7710 - Open back, lock
STI-7720 - Enclosed back box
STI-7730 - Enclosed back box,
lock, gasket

4. Small Thermostat Protector

Flush Model with Frangible Lock
STI-9102 - Clear

5. Large Thermostat Protector

Flush Model with Key Lock
STI-9110 - Large, clear
STI-9105 - Medium, clear

These heavy-duty cages are designed to protect a wide variety of devices; from smoke detectors to CCTV cameras, against vandalism and misuse, whilst allowing the device to remain fully accessible and operational.

VISIT THE WEBSITE TO VIEW
ALL PRODUCT VARIANTS

Three year guarantee against breakage of polycarbonate in normal use.

COVERS & CAGES

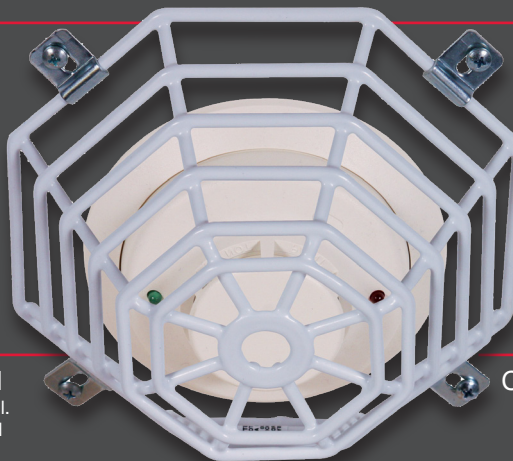
Steel Web Stoppers®

DESIGN

These cages are designed to protect smoke and heat detectors and other important equipment from vandalism and misuse. Designed so there is no interference with the operation of the protected unit.

INSTALLATION

Quick and easy to install. Cages can be retrofitted over an existing device allowing it to maintain its current location.



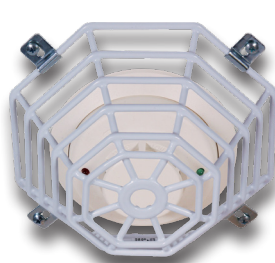
OPTIONS

Where additional security is required from theft or misuse, tamper resistant screws and matching bits are available.

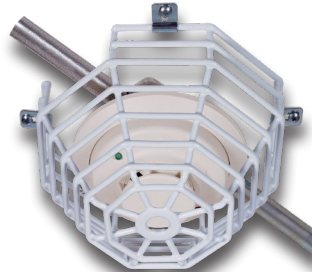
CONSTRUCTION

Constructed from plastic coated, heavy-duty galvanised steel rod, the cages can withstand the severest of abuse from vandalism or accidental damage.

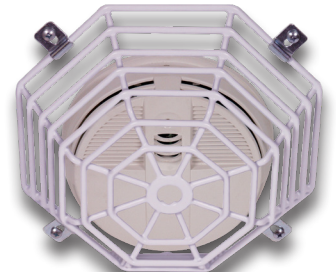
Smoke & Heat Detector Cages



1



2



3

1. STI-9604

For Smoke & Heat Detectors
175mm x 175mm x 75mm
STI-9606 - 210mm x 210mm x 117mm

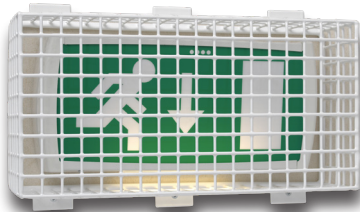
2. STI-9605

For Smoke & Heat Detectors
180mm x 180mm x 115mm
STI-9610 - 210mm x 210mm x 152mm

3. STI-9601

For Smoke & Heat Detectors
210mm x 210mm x 70mm
STI-9602 - 210mm x 210mm x 108mm

Lighting & CCTV Cages



4



5



6

4. STI-9644

For Emergency Lighting
220mm x 450mm x 128mm
STI-9641 - 273mm x 372mm x 100mm

5. STI-9625

For External Lighting
200mm x 260mm x 321mm

6. STI-9880

For Fluorescent Lights
110mm x 1295mm x 152mm
STI-9881 - 110mm x 1898mm x 152mm

Smoke Beam Cages



1



2



3

1. STI-9845

For Smoke Beams
225mm x 140mm x 120mm

2. STI-9624

For Smoke Beams
225mm x 140mm x 120mm
STI-9623 - 197mm x 152mm x 152mm

3. STI-9861

For Smoke Beams
186mm x 160mm x 143mm
STI-9862 - 187mm x 122mm x 70mm

PIR & Motion Detector Cages



4



5



6

4. STI-9620

For PIR & Motion Detectors
156mm x 102mm x 57mm

5. STI-9621

For PIR & Motion Detectors
178mm x 146mm x 114mm

6. STI-9622

For PIR & Motion Detectors
222mm x 102mm x 95mm

Beacon & Sounder Cages



7



8



9

7. STI-9664

For Beacon & Sounders

98mm x 98mm x 173mm

STI-9665 - 178mm x 178mm x 214mm

8. STI-9617

For Beacons & Sounders

150mm x 150mm x 125mm

STI-9615 - 95mm x 95mm x 88mm

9. STI-9636

For Clocks & Bells

527mm x 527mm x 92mm

STI-9635 - 362mm x 362mm x 92mm

Smoke & Heat Detector Cages

alternative options



10



11



12

10. STI-9713

For Photoelectric Smoke Detectors

174mm x 174mm x 63mm

STI-9712 - 174mm x 174mm x 115mm

11. STI-8100

For Smoke & Heat Detectors

210mm x 210mm x 95mm

STI-8130 - 210mm x 210mm x 146mm

12. STI-8200-SS

For Smoke & Heat Detectors

203mm x 203mm x 76mm

STI-8230-SS - 203mm x 203mm x 127mm

unauthorised entries. stop vandalism and damage to property. get easy wireless solutions. protect devices in extreme climates and weather. prevent false fire alarms. prevent theft and unauthorised entries. stop vandalism and damage to property. get easy wireless solutions. protect devices in extreme climates and weather. prevent false fire alarms. prevent theft and unauthorised entries. stop vandalism and damage to property. get easy wireless solutions. protect devices in extreme climates



**Safety Technology
International**

STI EMEA Office 34 Sherwood Road, Worcestershire, UK
+44 (0)1527 520 999 sales@sti-emea.com www.sti-global.com

and damage to property. get easy wireless solutions. protect devices in extreme climates