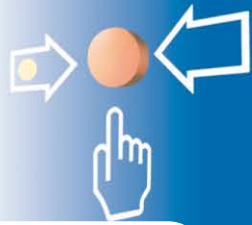


Wireless Sounder-Strobe

FI750/RF/WB/SSTWCR



- **Bi-directional communication with RF Interface Series FI750/RF**
- **32 different tone types and 4 sound levels selectable**
- **Strobe tested according to EN 54-23, red light, 2 power levels**
- **Easy programming through „Scan and Link Option“**
- **Redundant radio connection with range of up to 500km**



Description

The wireless sounder-strobe FI750/RF/WB/SSTWCR is used for acoustic and optical alarming in fire detection systems.

The wireless sounder-strobe FI750/RF/WB/SSTWCR communicates with the fire detection control panel via a loop RF Interface FI750/RF/W2W or a conventional RF Interface FI750/RF/CWE.

The integrated detector base is designed to accommodate an automatic wireless fire detector Series FI750/RF.

The tone type of the sounder can be selected with a DIL switch. 32 different tones are available, for example:

- Slow whoop tone according to NEN 2575,
- DIN tone according to DIN 33404,
- Continuous tone 970Hz,
- Alternating tone 800/1000Hz.

The sound level of the sounder can be set in 4 steps and the flash energy can be set in 2 steps by means

of a DIL switch. The strobe has been tested according to EN 54-23. It is always activated together with the sounder.

Thanks to the use of light emitting diodes, the strobe is especially power-saving.

For the bi-directional data transmission, 66 data channels in the 868MHz frequency band are available. During the learning phase, the address is set in the range 2 to 240 by means of the PC software TauREX. Two batteries which are inserted into the sounder-strobe provide power. The two batteries are included.

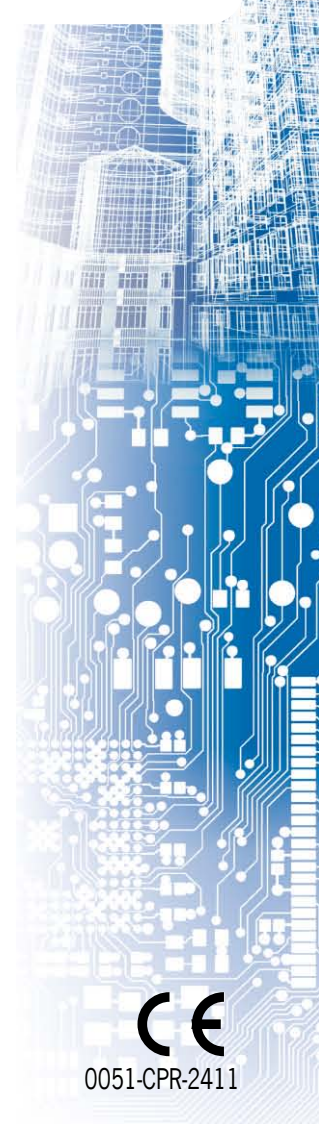
The wireless signalling device is integrated into a plastic case and is suitable for indoor installation. The device can also be operated without a detector attached to it. For this case, a white and a red plastic cover are available as accessories.

The RF system is especially suitable for areas where cabling is impossible or uneconomical.

Specifications

Power supply	2 lithium batteries CR123A
Battery life	up to 5 years
Range of radio transmission (free air)	max. 500m
Frequency band	868 MHz
Ambient temperature	-10°C to 55°C
Relative humidity	95%

Building Safety. Building Security.



0051-CPR-2411



Protection class	IP21C
Sound level	89 dB(A) (DIN tone)
Flash frequency	0.5 Hz
Light colour	red
Colour housing	white
EN 54-23 Category C-3-10.0 – ceiling mounting (high flash energy)	
Mounting height	max. 3m
Room size	max. Ø 10m, equals max. 7.1m × 7.1m
EN 54-23 Category O-1.7-6.0 – ceiling mounting (low flash energy)	
Dimensions Ø × D	130 × 55 (mm)
Weight	190g (without batteries)
Approvals	0051-CPR-2411
Order number	355237
Order name	Sounder-Str/WB/750RF/wh/cl/re/C FI750/RF/WB/SSTWCR

