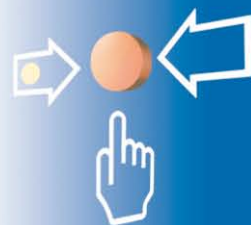


# Wireless Optical-thermal Detector

## FI750/RF/OT



- **Bi-directional communication with RF Interface Series FI750/RF**
- **3 sensitivity levels and Class A1R/B temperature sensor**
- **Long battery life – up to 10 years**
- **Easy programming through „Scan and Link Option“**
- **Redundant radio connection with range of up to 500m**



### Description

The wireless optical-thermal detector FI750/RF/OT communicates with the fire detection control panel via a loop RF Interface FI750/RF/W2W or a conventional RF Interface FI750/RF/CWE.

The wireless detector includes an optical sensing chamber for smoke detection and a temperature sensor according to EN 54-5 Class A1R or Class B. Therefore, the detector reacts to a quick rise in temperature as well as to a maximum temperature of 58°C or to a maximum temperature of 78°C. The combination of the two sensors ensures a high immunity to false alarms.

In addition, the sensitivity of the optical sensor can be set to one of 3 levels.

For the bi-directional data transmission, 66 data channels in the 868MHz frequency band are available. During

the learning phase, the address is set in the range 2 to 240 by means of the PC software TauREX.

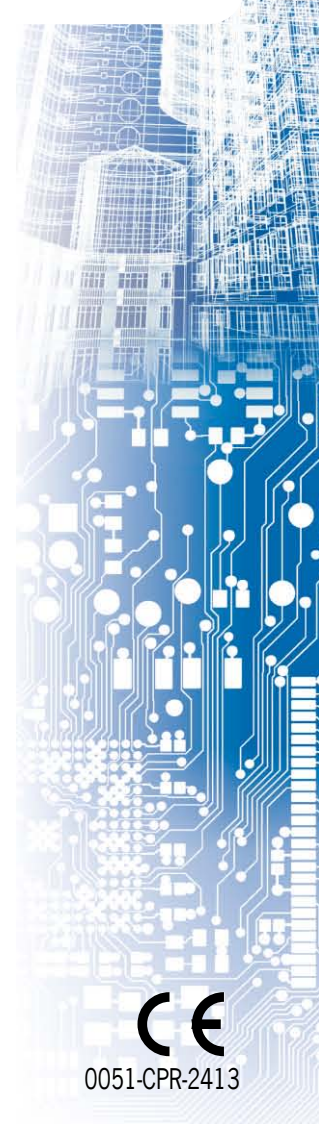
The two multicoloured LED indicators with 360° visibility indicate the activated condition of the detector as well as further operating conditions.

Two batteries which are inserted into the detector provide power. The wireless optical-thermal detector is integrated into a white case and is designed for indoor installation. The detector comes with a base and both batteries.

The RF system is especially suitable for areas where cabling is impossible or uneconomical.

### Specifications

Power supply	2 lithium batteries CR123A
Battery life	up to 10 years
Range of radio transmission (free air)	max. 500m
Frequency band	868 MHz
Ambient temperature	-10°C to 55°C
Relative humidity	95%
Protection class	IP40
Dimensions Ø x H	110 x 65 (mm)

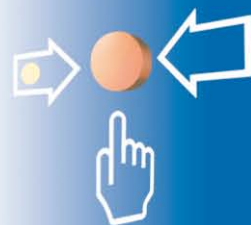


0051-CPR-2413

*Building Safety. Building Security.*



Colour	white
Weight (with batteries and base)	190g
Sensitivity	
Level 1	2.7 %/m
Level 2	3.4 %/m
Level 3	4.1 %/m
Alarm temperature	58 °C (Class A1R) 78 °C (Class B)
Approvals	0051-CPR-2413
Order number	241198
Order name	Detector/750/RF/complete FI750/RF/OT



*Building Safety. Building Security.*

