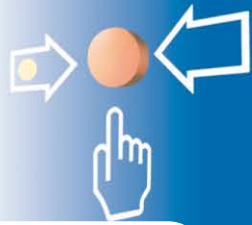


Manual Call Point

FI750/RF/MCP



- **Bi-directional communication with RF Interface Series FI750/RF**
- **Plastic pane is not broken by activation and can be reset easily**
- **Long battery life – up to 10 years**
- **Easy programming through „Scan and Link Option“**
- **Redundant radio connection with range of up to 500m**



Description

The wireless manual call point FI750/RF/MCP is integrated in a red plastic housing and communicates with the fire detection control panel via a loop RF Interface FI750/RF/W2W or a conventional RF Interface FI750/RF/CWE.

The manual call point is activated by pressing the non-breakable plastic pane. By means of the included reset key, the pane can be put back to the idle position, thereby resetting the call point.

The two-coloured LED indicates the activated condition of the call point as well as further operating conditions.

For the bi-directional data transmission, 66 data channels in the 868MHz frequency band are available. During the learning phase, the address is set in the range 2 to 240 by means of the PC software TauREX.

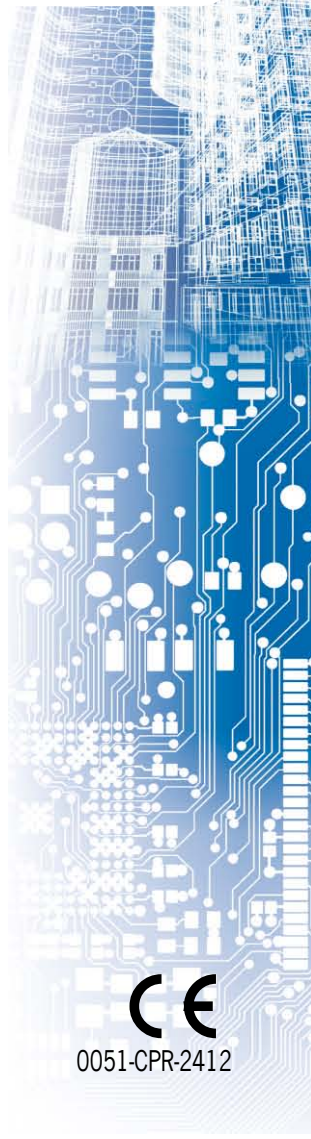
Two batteries which are inserted into the manual call point provide power.

The mounting box, both batteries and the special key are included in the scope of delivery.

The RF system is especially suitable for areas where cabling is impossible or uneconomical.

Specifications

Power supply	2 lithium batteries CR123A
Battery life	up to 10 years
Range of radio transmission (free air)	max. 500m
Frequency band	868 MHz
Ambient temperature	-10°C to 55°C
Protection class	IP42
Dimensions W x H x D	85 x 85 x 60 (mm)
Colour	red
Weight	160g (without batteries)
Approvals	0051-CPR-2412
Order number	245077
Order name	Manual Call Point/Red/750/RF/Flexi FI750/RF/MCP



0051-CPR-2412

Building Safety. Building Security.

