



Verona 13th November 2012

ILIA ACCESSORIES

MODEL	CODE	DIMENSION	WEIGHT
OVERHOUSING	SOHI	300X300X260 mm	2,1 Kg

SOHI is a special Overhousing for use in ILIA LINE detectors in particular Steam and Dusty environment granting an High protection of the Detector for long life in such environments

The use of **SOHI** is for use in ILIA LINE detectors for particular Steam and Dusty environment granting an High protection of the Detector for long life in such environments.

The use of **SOHI** doesn't change the performance in sensitivity and detection of ILIA. Neither substantially the total covered length change as you can use it with performance up to 180 meters as the reduced is around 0,72 dB (around 10% of reduction from the certificate distance).

The misalignment angle remain at 1° in each direction.

The use of the metallic cap is to be intended when the areas in which ILIA with SOHI is mounted, will be washed with high pressure water or cleaned with chemical substances.

SOHI is certified **IP65** protection degree Housing by Italian notified body **Istituto Masini**; test has been made in accordance with **EN60529**.

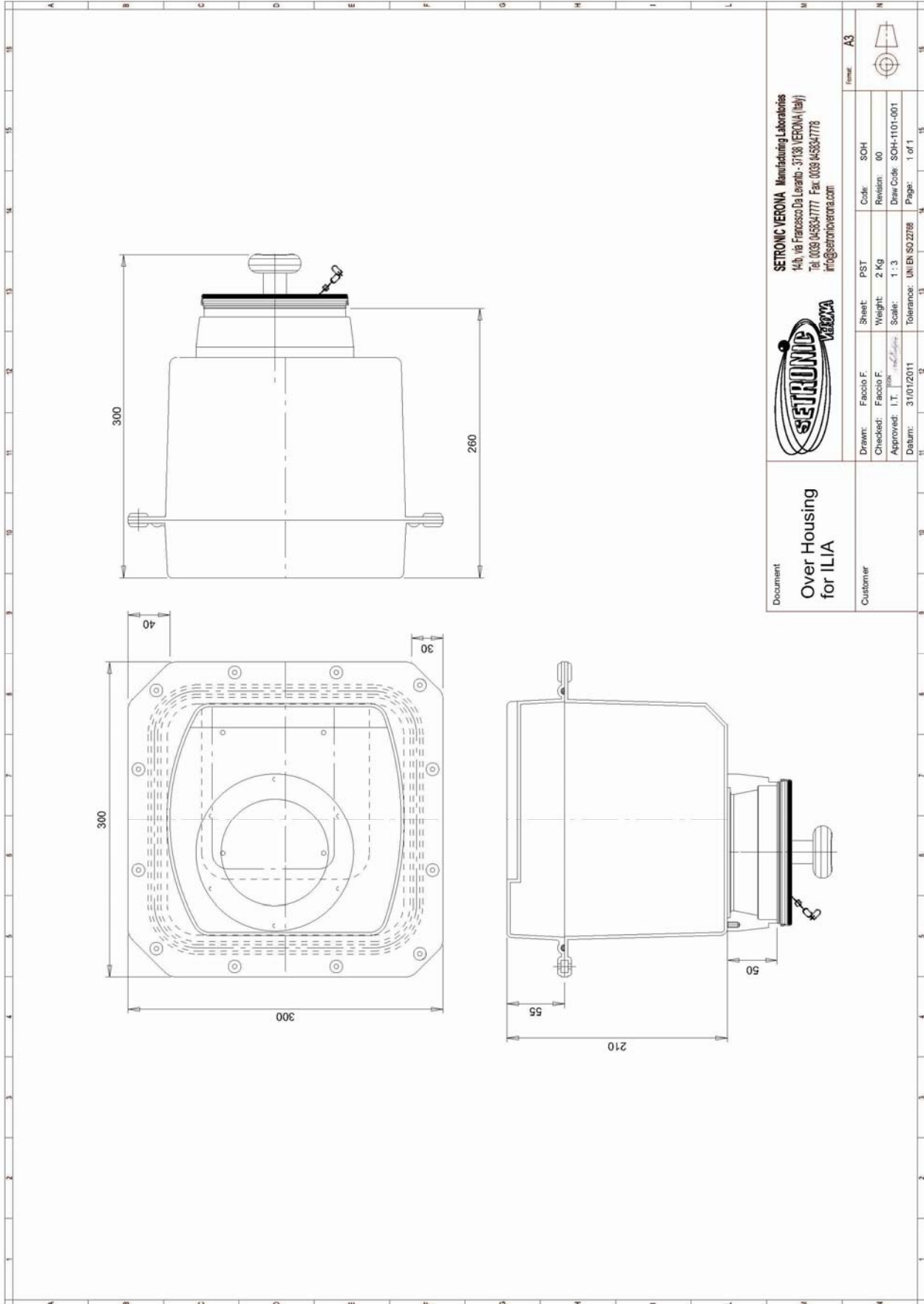
The package of SOHI is comprehensive with:

- SOHI PLATE AND FRONT COVER
- FRONTAL CAP
- PLASTIC BAG WITH INSIDE TWO IP66 CABLE GLAND, FIVE NOODLES FOR ILIA INTERNAL MOUNTING, 8 FIXING SCREWS FOR THE FRONT COVER
- INSTRUCTION FOR INTERNAL MOUNTING OF ILIA AND FIXING OF SOHI



RILEVAZIONE ELETTRONICA ANTINCENDIO

37138 VERONA (Italy) • Via F. Da Levanto 14B
 Tel. +39 - 0458347777 • Fax +39 - 0458347778
 info@setronicverona.com • www.setronicverona.com











RILEVAZIONE ELETTRONICA ANTINCENDIO

37138 VERONA (Italy) • Via F. Da Levanto 14-B
 Tel. +39 - 0458347777 • Fax +39 - 0458347778
 info@setronicverona.com • www.setronicverona.com

SETRONIC Verona si riserva il diritto di proprietà del presente documento, con divieto di riproduzione senza sua autorizzazione.

<p>1</p> <p>Weight: 2,1 kg</p>  <p>L 303 x W 303 x H 260 mm</p>	<p>2</p> 
<p>3</p>  <p>HOLE Ø 15 mm</p>	<p>4</p> 
<p>5</p>  <p>UP↑</p>	<p>6</p> 



RILEVAZIONE ELETTRONICA ANTINCENDIO

37138 VERONA (Italy) • Via F. Da Levanto 14-B
 Tel. +39 - 0458347777 • Fax +39 - 0458347778
 info@setronicverona.com • www.setronicverona.com

SETRONIC Verona si riserva il diritto di proprietà del presente documento, con divieto di riproduzione senza sua autorizzazione.

